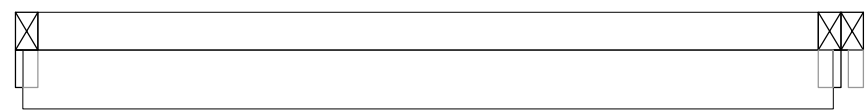


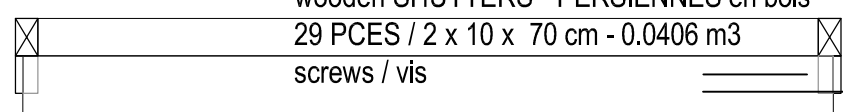
wooden LINTEL - LINTAUX en bois
 4 PCES / 5 x 8 x 110 cm - 0.0176 m3
 screws / vis

wooden SHUTTERS
 PERSIENNES en bois
 29 PCES / 2 x 10 x 110 cm
 0.0638 m3
 screws / vis

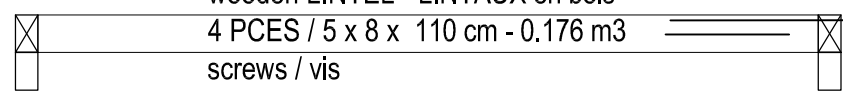
lateral FRAME - MONTANT lateral
 2 PCES / 3 x 10 x 290 cm - 0.0174 m3
 screws / vis



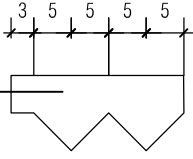
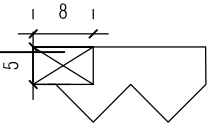
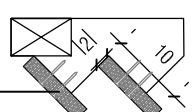
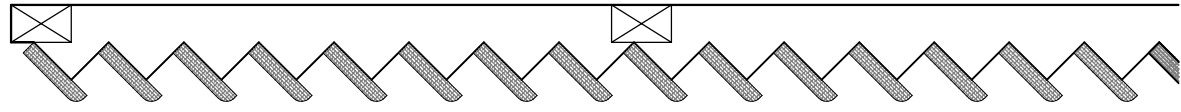
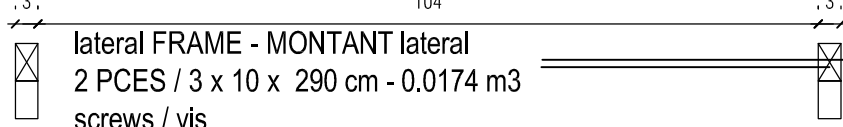
wooden SHUTTERS - PERSIENNES en bois
 29 PCES / 2 x 10 x 70 cm - 0.0406 m3
 screws / vis



wooden LINTEL - LINTAUX en bois
 4 PCES / 5 x 8 x 110 cm - 0.176 m3
 screws / vis



lateral FRAME - MONTANT lateral
 2 PCES / 3 x 10 x 290 cm - 0.0174 m3
 screws / vis



| | | |
|---|--------------------------------|----------------------------|
| CONSTRUCTION D'UNE - CONSTRUCTION OF A ECOLE PRIMAIRE - PRIMARY SCHOOL THAVIVANH MEILLARD ÎLE DE - DON DET - ISLAND / MEKONG LAOS - LAO | | |
| MAITRE D'OUVRAGE 200 FAMILLES - 200 FAMILIES | DOSSIER LAOS - 2017 - DD 01 | |
| PLAN SCHUTTERS 70 - détails - PERSIENNES 70 | INDICE exe B | NO DE PLAN 60-12 |
| MODIFICATIONS | ARCHITECTE | ECHELLE 1 : 10 |
| | | DATE 2018-0126 |